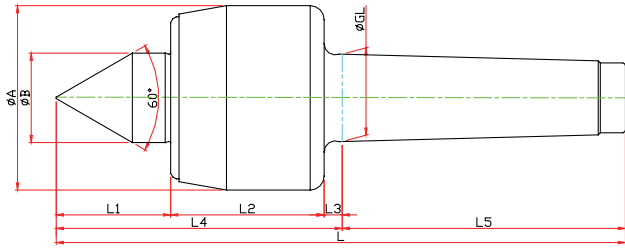


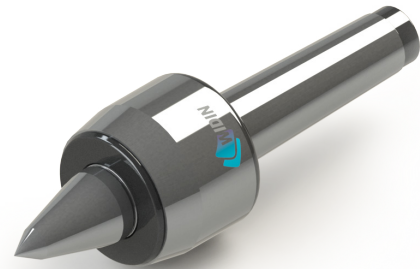
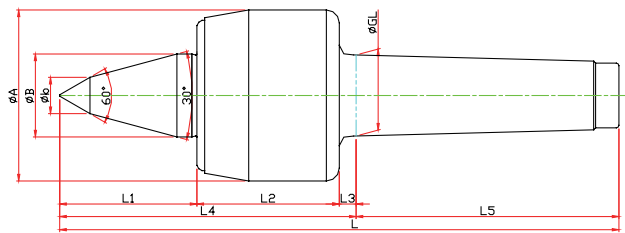
NC-TYPE



Model	Order Number	Morse Taper	Dimension										Weight MAX.	R.P.M MAX.	Run Out
			GL	A	B	L1	L2	L3	L4	L5	L				
LC-3NC	010003	NO.3	23.825	50	22	27	45	5	77	81	158	630	4800	0.003	
LC-4NC	010004	NO.4	31.267	66	32	41	55	6.5	102.5	101.5	204	1100	3800	0.003	
LC-5NC	010005	NO.5	44.399	82	40	50	65	6.5	121.5	129.5	251	1600	3400	0.005	
LC-6NC	010006	NO.6	63.384	105	45	54	80	8	142	182	324	2100	3000	0.005	

NCB-TYPE

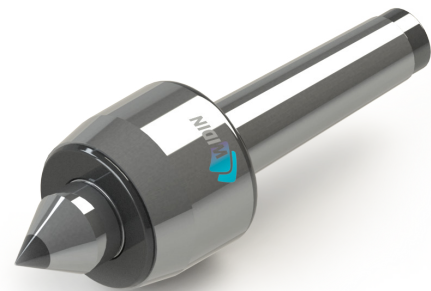
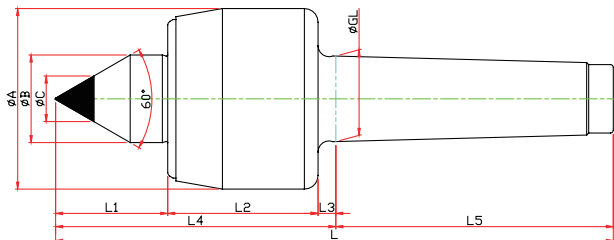
※ SHAFT 확장(바이트 간섭 최소화) SHAFT EXTENSION(Minimize the bite-interference)



Model	Order Number	Morse Taper	Dimension										Weight MAX.	R.P.M MAX.	Run Out
			GL	A	B	b	L1	L2	L3	L4	L5	L			
LC-3NCB	011003	NO.3	23.825	50	22	10	47	45	5	97	81	178	280	4800	0.003
LC-4NCB	011004	NO.4	31.267	66	32	14	53	55	6.5	114.5	101.5	216	510	3800	0.003
LC-5NCB	011005	NO.5	44.399	82	40	16	65	65	6.5	129.5	129.5	266	750	3400	0.005
LC-6NCB	011006	NO.6	63.384	105	45	18	78	80	8	182	182	348	940	3000	0.005

NCC-TYPE

※ 초경타입 Carbide Type



Model	Order Number	Morse Taper	Dimension										Weight MAX.	R.P.M MAX.	Run Out
			GL	A	B	L1	L2	L3	L4	L5	C	L			
LC-3NCC	010103	NO.3	23.825	50	22	27	45	5	77	81	10	158	630	4800	0.003
LC-4NCC	010104	NO.4	31.267	66	32	41	55	6.5	102.5	101.5	14	204	1100	3800	0.003
LC-5NCC	010105	NO.5	44.399	82	40	50	65	6.5	121.5	129.5	18	251	1600	3400	0.005
LC-6NCC	010106	NO.6	63.384	105	45	54	80	8	142	182	25	324	2100	3000	0.005